

2011 Accountability Progress Report

District Name: Campbell Union High

Produced by: SSchoolPlan and SchoolCity, Inc.

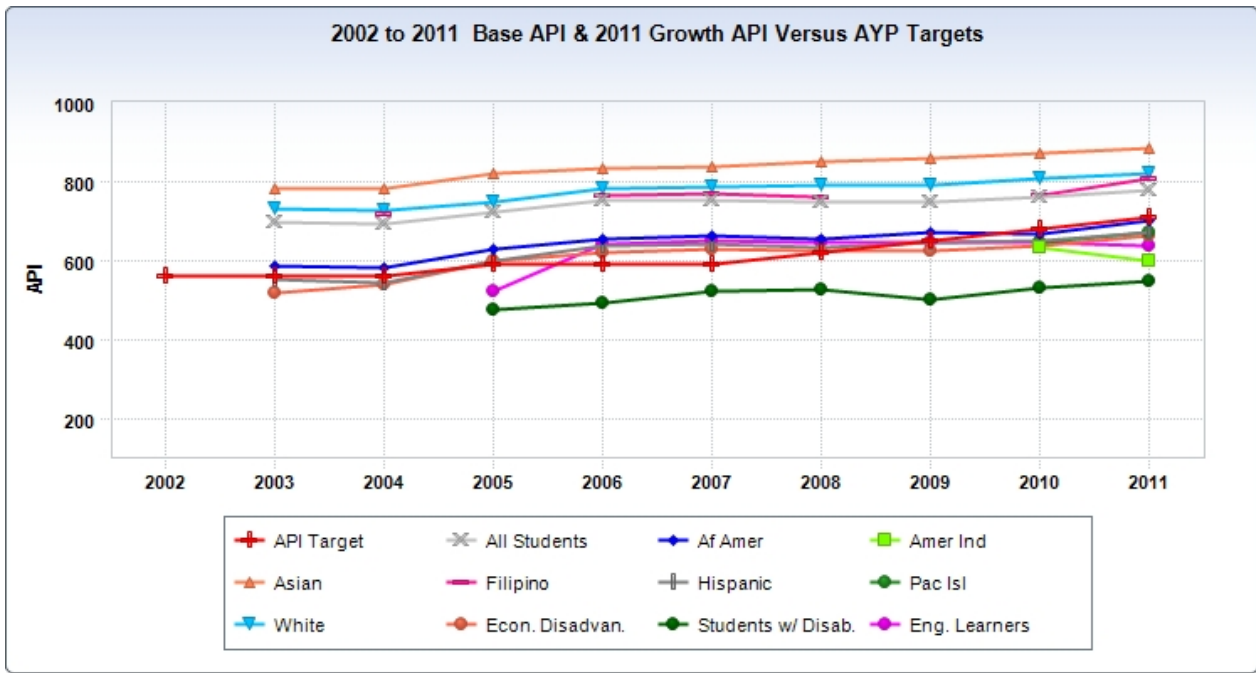
For more information contact:

Santa Clara County Office of Education
Standards & Assessment Department
(408) 453-6527

2002 - 2011 Academic Performance Index (API)

Base API Scores

Measurable Objectives (AMOs)	2002 API (Base)	2003 API (Base)	2004 API (Base)	2005 API (Base)	2006 API (Base)	2007 API (Base)	2008 API (Base)	2009 API (Base)	2010 API (Base)	2011 API (Growth)
API Target	560	560	560	590	590	590	620	650	680	710
All Students		696	691	723	751	752	749	747	761	777
Af Amer		586	582	629	656	664	653	670	669	700
Amer Ind									632	600
Asian		783	784	820	835	840	851	859	873	883
Filipino			720		766	769	761		764	806
Hispanic		551	543	598	639	641	633	644	649	671
Pac Isl									644	671
White		732	725	749	782	787	790	790	806	820
Econ. Disadvan.		517	538	597	620	628	623	624	639	662
Students w/ Disab.				474	494	524	526	501	529	546
Eng. Learners				523	642	649	647	645	646	638



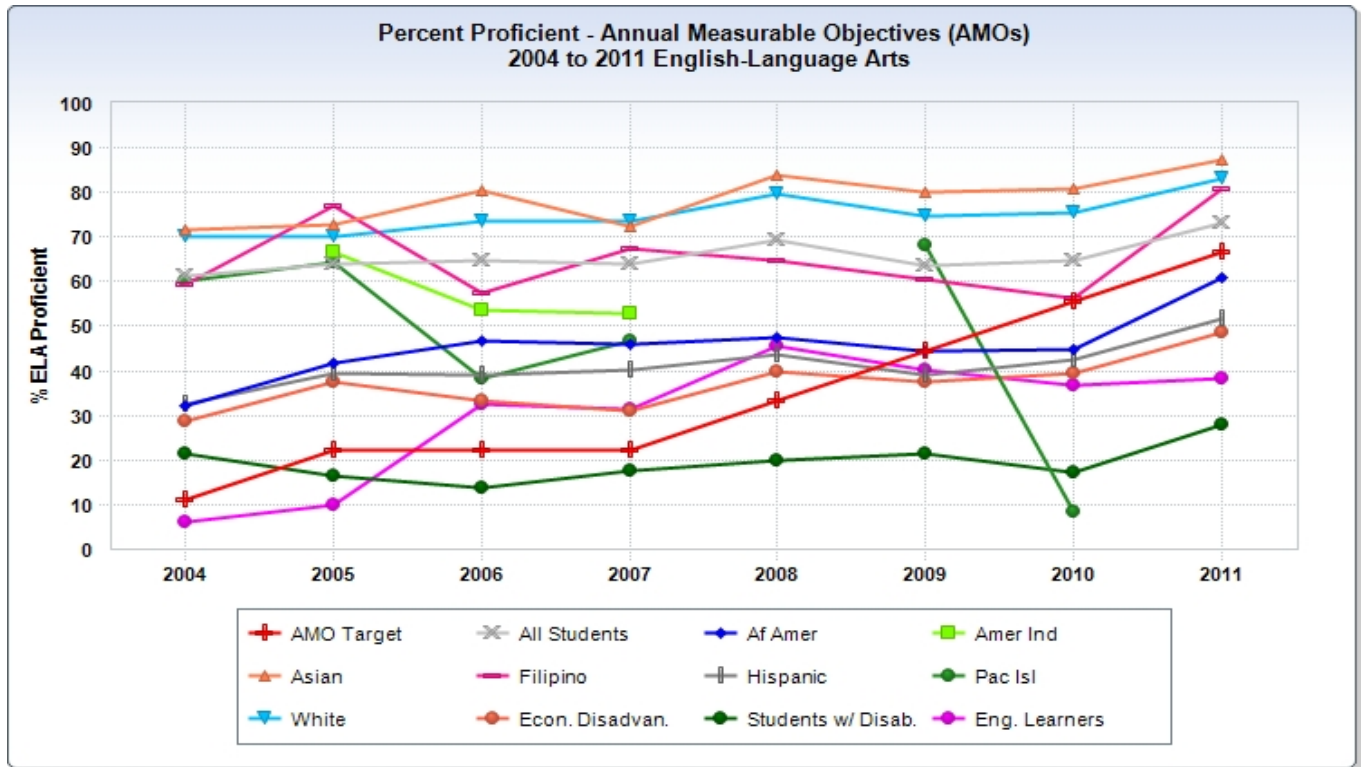
2004 - 2011 Adequate Yearly Progress (AYP)

AYP: English Language Arts (ELA)

% ELA Proficient

ELA AMO Met?

Measurable Objectives (AMOs)	% ELA Proficient								ELA AMO Met?							
	2004 ELA	2005 ELA	2006 ELA	2007 ELA	2008 ELA	2009 ELA	2010 ELA	2011 ELA	2004 ELA	2005 ELA	2006 ELA	2007 ELA	2008 ELA	2009 ELA	2010 ELA	2011 ELA
AMO Target	11.2	22.3	22.3	22.3	33.4	44.5	55.6	66.7								
All Students	61.3	63.8	64.9	63.8	69.2	63.6	64.6	73.1	Yes	Yes	Yes	Yes	Yes	Yes	Yes	Yes
Af Amer	32.1	41.9	46.8	45.8	47.5	44.4	44.9	61.1	N/A	--	--	--	--	--	--	--
Amer Ind		66.7	53.8	52.9					N/A	--	--	--	--	--	--	--
Asian	71.6	72.9	80.5	72.5	83.8	79.9	81.0	87.3	Yes	Yes	Yes	Yes	Yes	Yes	Yes	Yes
Filipino	59.2	77.1	57.5	67.5	64.7	60.5	56.2	80.8	N/A	--	--	--	--	--	--	--
Hispanic	32.6	39.5	38.9	40.3	43.8	39.0	42.7	51.8	Yes	Yes	Yes	Yes	Yes	No	No	Yes
Pac Isl	60.0	64.3	38.5	46.7		68.2	8.3		N/A	--	--	--	--	--	--	--
White	70.1	70.1	73.5	73.7	79.8	74.7	75.4	83.0	Yes	Yes	Yes	Yes	Yes	Yes	Yes	Yes
Econ. Disadvan.	28.6	37.4	33.4	30.9	40.0	37.6	39.6	48.5	Yes	Yes	Yes	Yes	Yes	No	No	Yes
Students w/ Disab.	21.5	16.4	13.8	17.8	20.1	21.4	17.4	27.9	Yes	Yes	Yes	No	No	No	No	No
Eng. Learners	6.2	9.9	32.5	31.3	45.6	40.4	36.8	38.3	No	--	--	--	Yes	No	No	No



2004 - 2011 Adequate Yearly Progress (AYP)

AYP: Mathematics

% Math Proficient

Math AMO Met?

Measurable Objectives (AMOs)	% Math Proficient								Math AMO Met?							
	2004 Math	2005 Math	2006 Math	2007 Math	2008 Math	2009 Math	2010 Math	2011 Math	2004 Math	2005 Math	2006 Math	2007 Math	2008 Math	2009 Math	2010 Math	2011 Math
AMO Target	9.6	20.9	20.9	20.9	32.2	43.5	54.8	66.1								
All Students	56.9	59.6	62.7	64.9	63.8	65.1	65.5	68.7	Yes	Yes	Yes	Yes	Yes	Yes	Yes	Yes
Af Amer	30.3	38.7	35.1	42.3	46.3	48.6	40.0	48.1	N/A	--	--	--	--	--	--	--
Amer Ind		66.7	38.5	29.4					N/A	--	--	--	--	--	--	--
Asian	81.3	81.8	86.3	85.1	89.0	89.9	89.6	87.2	Yes	Yes	Yes	Yes	Yes	Yes	Yes	Yes
Filipino	55.5	74.3	60.0	72.5	58.8	57.9	56.2	76.9	N/A	--	--	--	--	--	--	--
Hispanic	28.1	32.5	37.3	40.7	37.8	40.9	40.2	47.1	Yes	Yes	Yes	Yes	Yes	No	No	Yes
Pac Isl	40.0	50.0	41.7	43.8		54.5	16.7		N/A	--	--	--	--	--	--	--
White	62.4	64.0	70.6	73.3	72.7	74.9	77.3	78.6	Yes	Yes	Yes	Yes	Yes	Yes	Yes	Yes
Econ. Disadvan.	31.4	35.2	38.6	34.3	41.3	40.0	38.1	47.5	Yes	Yes	Yes	Yes	Yes	No	No	Yes
Students w/ Disab.	17.1	10.3	10.3	17.0	16.0	23.9	20.0	21.7	Yes	Yes	Yes	Yes	No	No	No	No
Eng. Learners	25.7	24.4	47.5	45.8	48.9	49.8	42.0	40.3	Yes	--	--	--	Yes	Yes	No	No

