

# **2011 Accountability Progress Report**

**School Name: Folsom High**

**District Name: Folsom-Cordova Unified**

Produced by: SSchoolPlan and SchoolCity, Inc.

For more information contact:

Santa Clara County Office of Education  
Standards & Assessment Department  
(408) 453-6527

# 2002 - 2011 Academic Performance Index (API)

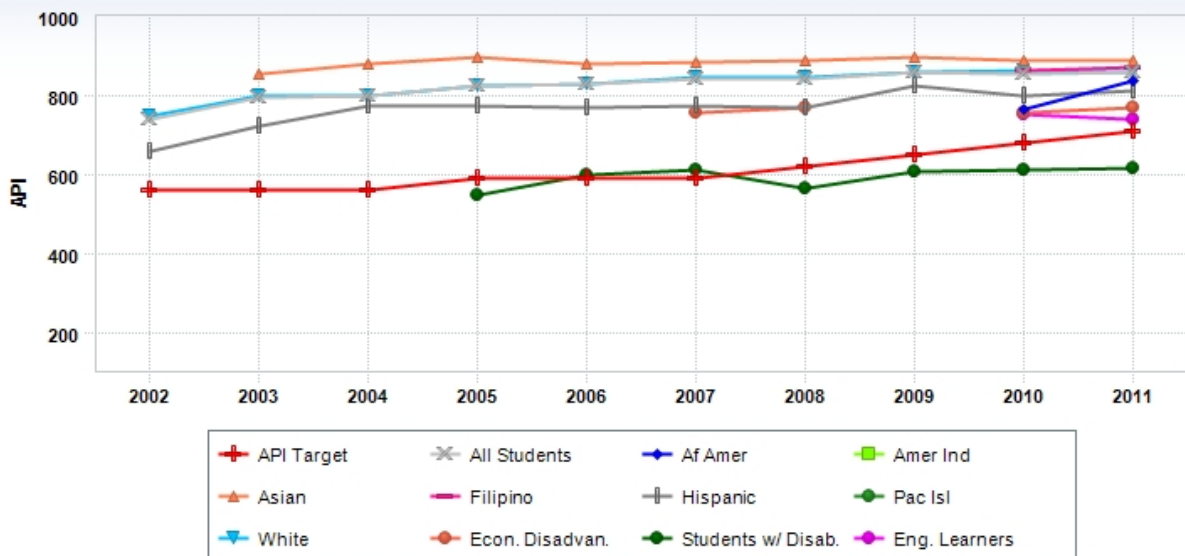
## Folsom High Base API Scores

Measurable Objectives (AMOs)	2002 API (Base)	2003 API (Base)	2004 API (Base)	2005 API (Base)	2006 API (Base)	2007 API (Base)	2008 API (Base)	2009 API (Base)	2010 API (Base)	2011 API (Growth)
API Target	560	560	560	590	590	590	620	650	680	710
All Students	740	796	799	827	828	844	843	860	857	860
Af Amer									766	838
Amer Ind										
Asian		854	879	899	880	885	889	899	889	889
Filipino									863	874
Hispanic	659	723	773	776	769	772	771	827	799	811
Pac Isl										
White	747	800	798	826	828	847	845	860	862	861
Econ. Disadvan.						757	771		759	770
Students w/ Disab.				547	599	612	564	606	613	618
Eng. Learners									753	741

### Met API Growth Target?

Annual Measurable Objectives (AMOs)	2002 API Growth	2003 API Growth	2004 API Growth	2005 API Growth	2006 API Growth	2007 API Growth	2008 API Growth	2009 API Growth	2010 API Growth	2011 API Growth
All Students	Yes	Yes	Yes	Yes	Yes	Yes	Yes	Yes	Yes	Yes
Af Amer										
Amer Ind										
Asian			Yes	Yes	Yes	Yes	Yes	Yes	Yes	Yes
Filipino										
Hispanic		Yes	Yes	Yes	No	No	No	Yes	Yes	Yes
Pac Isl										
White	Yes	Yes	No	Yes	Yes	Yes	Yes	Yes	Yes	Yes
Econ. Disadvan.							Yes			Yes
Students w/ Disab.					Yes	No	No	Yes	Yes	No
Eng. Learners										

2002 to 2011 Base API & 2011 Growth API Versus AYP Targets



# 2004 - 2011 Adequate Yearly Progress (AYP)

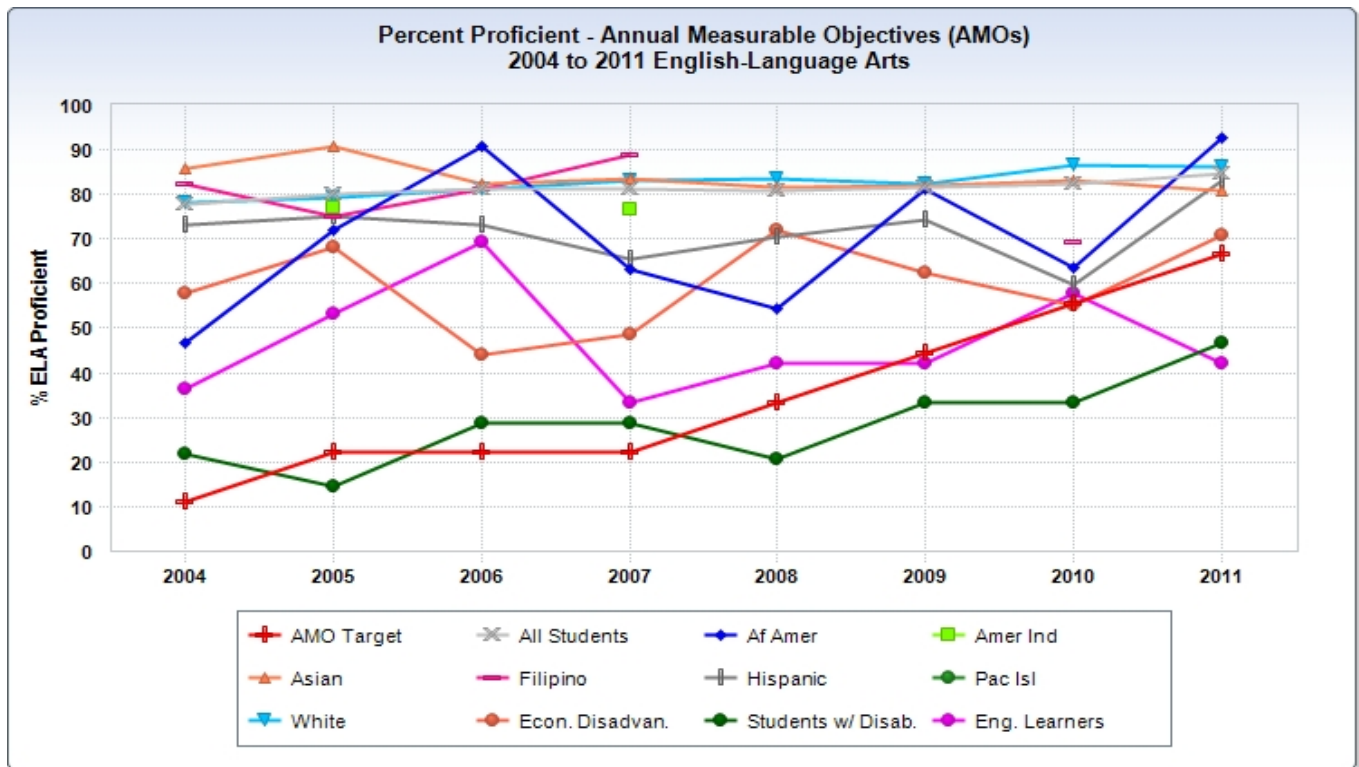
## Folsom High

### AYP: English Language Arts (ELA)

#### % ELA Proficient

#### ELA AMO Met?

Measurable Objectives (AMOs)	% ELA Proficient								ELA AMO Met?							
	2004 ELA	2005 ELA	2006 ELA	2007 ELA	2008 ELA	2009 ELA	2010 ELA	2011 ELA	2004 ELA	2005 ELA	2006 ELA	2007 ELA	2008 ELA	2009 ELA	2010 ELA	2011 ELA
AMO Target	11.2	22.3	22.3	22.3	33.4	44.5	55.6	66.7								
All Students	77.6	79.9	81.1	81.4	81.0	81.6	82.2	84.6	Yes	Yes	Yes	Yes	Yes	Yes	Yes	Yes
Af Amer	46.6	72.2	90.9	63.2	54.5	81.3	63.6	92.9	N/A	--	--	--	--	--	--	--
Amer Ind		76.9		76.5					N/A	--	--	--	--	--	--	--
Asian	86.0	90.9	82.5	83.6	81.8	82.1	83.3	80.9	N/A	--	--	--	--	--	--	Yes
Filipino	82.3	75.0	81.3	88.9			69.2		N/A	--	--	--	--	--	--	--
Hispanic	73.3	75.0	73.1	65.4	70.6	74.3	59.6	83.3	N/A	--	--	--	--	--	--	--
Pac Isl									N/A	--	--	--	--	--	--	--
White	78.2	79.4	81.3	83.3	83.4	82.4	86.7	86.3	Yes	Yes	Yes	Yes	Yes	Yes	Yes	Yes
Econ. Disadvan.	58.0	68.2	44.1	48.5	72.2	62.5	55.0	70.8	N/A	--	--	--	--	--	--	--
Students w/ Disab.	21.8	14.6	28.9	28.6	20.8	33.3	33.3	46.8	N/A	--	--	--	--	--	--	--
Eng. Learners	36.3	53.3	69.2	33.3	42.3	42.3	57.7	42.1	N/A	--	--	--	--	--	--	--



# 2004 - 2011 Adequate Yearly Progress (AYP)

## Folsom High AYP: Mathematics

### % Math Proficient

### Math AMO Met?

Measurable Objectives (AMOs)	% Math Proficient								Math AMO Met?							
	2004 Math	2005 Math	2006 Math	2007 Math	2008 Math	2009 Math	2010 Math	2011 Math	2004 Math	2005 Math	2006 Math	2007 Math	2008 Math	2009 Math	2010 Math	2011 Math
AMO Target	9.6	20.9	20.9	20.9	32.2	43.5	54.8	66.1								
All Students	76.3	79.1	77.7	84.5	82.0	83.5	84.6	80.4	Yes	Yes	Yes	Yes	Yes	Yes	Yes	Yes
Af Amer	46.6	77.8	66.7	73.7	72.7	75.0	45.5	85.7	N/A	--	--	--	--	--	--	--
Amer Ind		76.9		87.5					N/A	--	--	--	--	--	--	--
Asian	93.0	93.2	84.2	92.5	90.9	92.7	93.9	80.9	N/A	--	--	--	--	--	--	Yes
Filipino	94.1	68.8	73.3	94.4			53.8		N/A	--	--	--	--	--	--	--
Hispanic	68.8	65.9	65.4	69.2	58.8	71.4	70.2	73.3	N/A	--	--	--	--	--	--	--
Pac Isl									N/A	--	--	--	--	--	--	--
White	76.5	79.1	78.5	85.3	83.5	84.1	87.7	80.5	Yes	Yes	Yes	Yes	Yes	Yes	Yes	Yes
Econ. Disadvan.	74.1	68.2	40.0	60.6	75.7	83.9	62.5	64.6	N/A	--	--	--	--	--	--	--
Students w/ Disab.	26.4	26.8	25.0	39.3	25.5	24.2	30.0	31.9	N/A	--	--	--	--	--	--	--
Eng. Learners	63.6	66.7	61.5	61.9	57.7	72.0	61.5	68.4	N/A	--	--	--	--	--	--	--

