

2011 Accountability Progress Report

School Name: Fulton (Harry C.) Middle

District Name: Fountain Valley Elementary

Produced by: SSchoolPlan and SchoolCity, Inc.

For more information contact:

Santa Clara County Office of Education
Standards & Assessment Department
(408) 453-6527

2002 - 2011 Academic Performance Index (API)

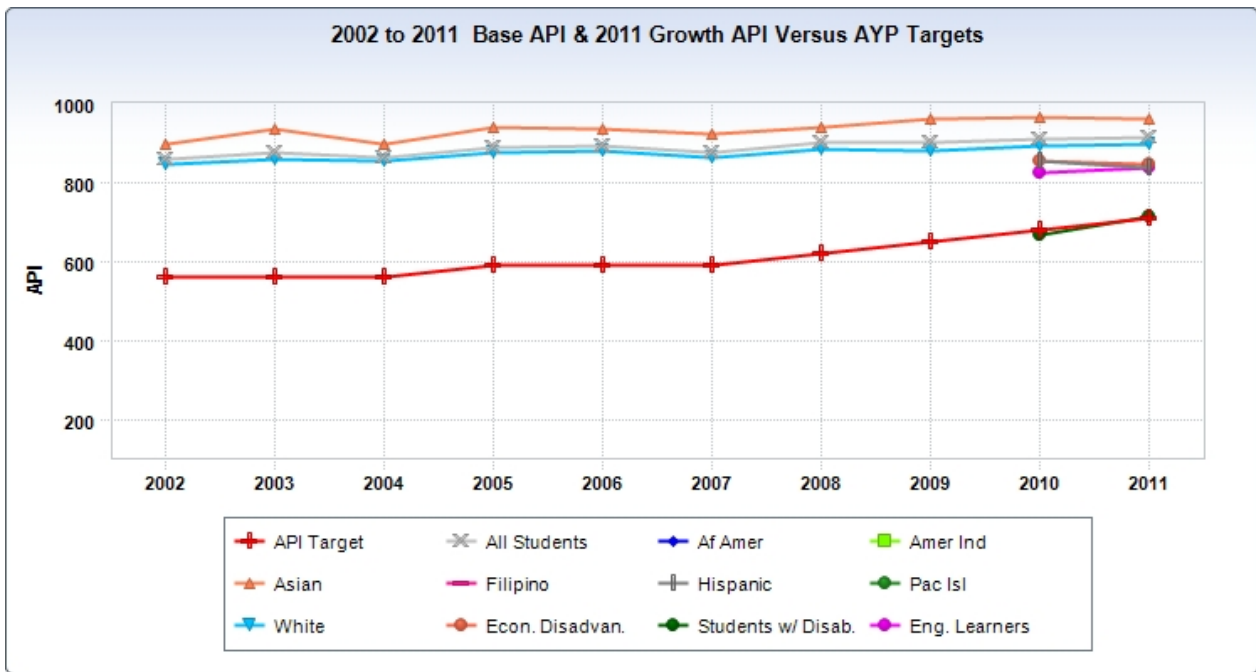
Fulton (Harry C.) Middle

Base API Scores

Measurable Objectives (AMOs)	2002 API (Base)	2003 API (Base)	2004 API (Base)	2005 API (Base)	2006 API (Base)	2007 API (Base)	2008 API (Base)	2009 API (Base)	2010 API (Base)	2011 API (Growth)
API Target	560	560	560	590	590	590	620	650	680	710
All Students	859	877	862	890	895	875	901	903	912	916
Af Amer										
Amer Ind										
Asian	898	935	898	939	935	925	940	963	965	962
Filipino										
Hispanic									855	839
Pac Isl										
White	848	861	855	877	880	865	885	881	892	898
Econ. Disadvan.									856	846
Students w/ Disab.									668	716
Eng. Learners									824	837

Met API Growth Target?

Annual Measurable Objectives (AMOs)	2002 API Growth	2003 API Growth	2004 API Growth	2005 API Growth	2006 API Growth	2007 API Growth	2008 API Growth	2009 API Growth	2010 API Growth	2011 API Growth
All Students	Yes	Yes	Yes	Yes	Yes	Yes	Yes	Yes	Yes	Yes
Af Amer										
Amer Ind										
Asian	Yes	Yes	Yes	Yes	Yes	Yes	Yes	Yes	Yes	Yes
Filipino										
Hispanic										
Pac Isl										
White	Yes	Yes	Yes	Yes	Yes	Yes	Yes	Yes	Yes	Yes
Econ. Disadvan.										
Students w/ Disab.										
Eng. Learners										



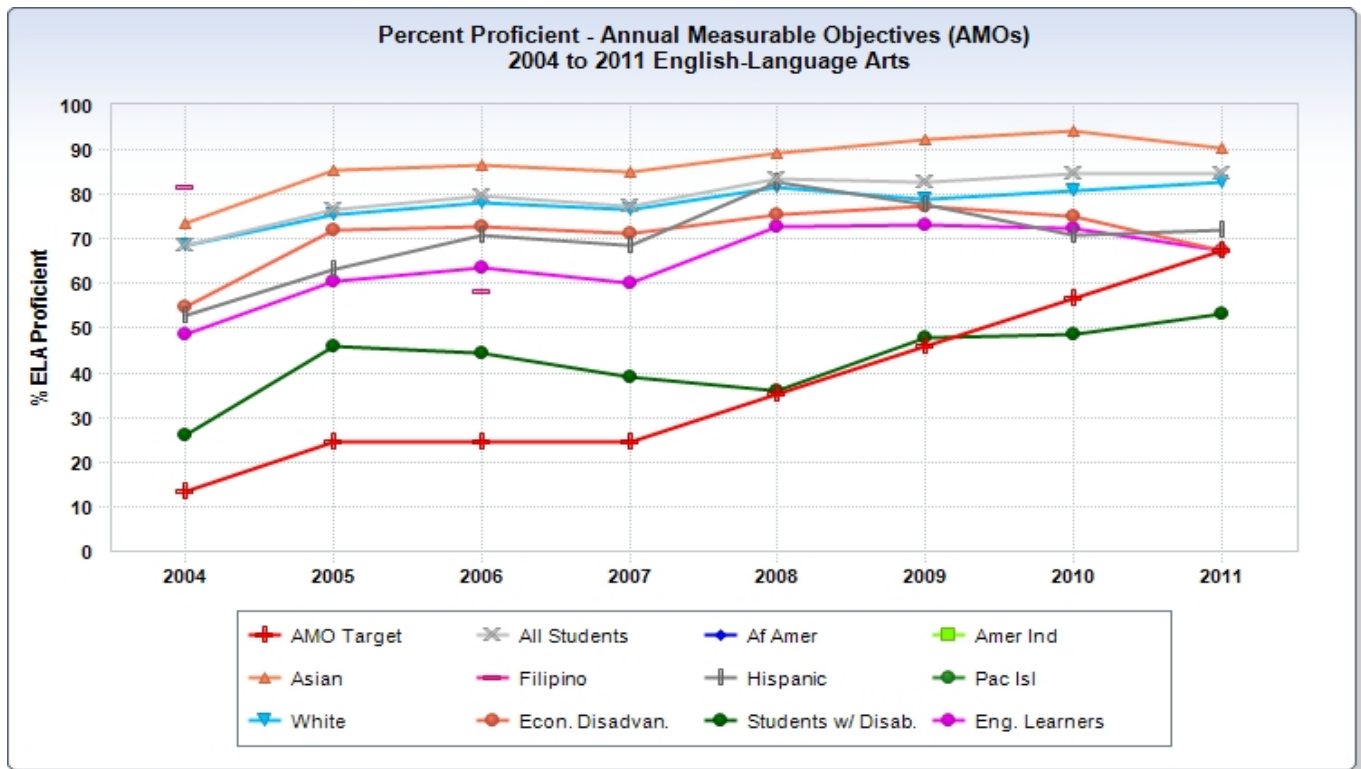
2004 - 2011 Adequate Yearly Progress (AYP)

Fulton (Harry C.) Middle AYP: English Language Arts (ELA)

% ELA Proficient

ELA AMO Met?

Measurable Objectives (AMOs)	% ELA Proficient									ELA AMO Met?							
	2004 ELA	2005 ELA	2006 ELA	2007 ELA	2008 ELA	2009 ELA	2010 ELA	2011 ELA	2012 ELA	2004 ELA	2005 ELA	2006 ELA	2007 ELA	2008 ELA	2009 ELA	2010 ELA	2011 ELA
AMO Target	13.6	24.4	24.4	24.4	35.2	46.0	56.8	67.6									
All Students	68.5	76.5	79.7	77.5	83.6	82.8	84.5	84.7		Yes	Yes	Yes	Yes	Yes	Yes	Yes	Yes
Af Amer										N/A	--	--	--	--	--	--	--
Amer Ind										N/A	--	--	--	--	--	--	--
Asian	73.6	85.3	86.7	85.0	89.3	92.5	94.4	90.6		Yes	Yes	Yes	Yes	Yes	Yes	Yes	Yes
Filipino	81.8		58.3							N/A	--	--	--	--	--	--	--
Hispanic	53.0	63.2	70.9	68.7	82.8	77.8	70.8	71.9		N/A	--	--	--	--	--	--	--
Pac Isl										N/A	--	--	--	--	--	--	--
White	68.7	75.3	78.3	76.5	81.8	78.9	80.9	82.8		Yes	Yes	Yes	Yes	Yes	Yes	Yes	Yes
Econ. Disadvan.	54.8	72.1	72.7	71.2	75.3	77.3	75.0	67.5		N/A	--	--	--	--	--	--	Yes
Students w/ Disab.	26.1	45.9	44.4	38.9	36.1	48.0	48.8	53.3		N/A	--	--	--	--	--	--	--
Eng. Learners	48.5	60.7	63.6	60.0	72.7	73.3	72.3	67.6		N/A	--	--	--	--	--	--	--



2004 - 2011 Adequate Yearly Progress (AYP)

Fulton (Harry C.) Middle

AYP: Mathematics

% Math Proficient

Math AMO Met?

Measurable Objectives (AMOs)	% Math Proficient								Math AMO Met?							
	2004 Math	2005 Math	2006 Math	2007 Math	2008 Math	2009 Math	2010 Math	2011 Math	2004 Math	2005 Math	2006 Math	2007 Math	2008 Math	2009 Math	2010 Math	2011 Math
AMO Target	16.0	26.5	26.5	26.5	37.0	47.5	58.0	68.5								
All Students	73.8	76.3	75.0	67.6	76.7	78.4	80.3	79.0	Yes	Yes	Yes	Yes	Yes	Yes	Yes	Yes
Af Amer									N/A	--	--	--	--	--	--	--
Amer Ind									N/A	--	--	--	--	--	--	--
Asian	85.7	85.8	90.0	83.4	83.6	90.4	92.9	90.6	Yes	Yes	Yes	Yes	Yes	Yes	Yes	Yes
Filipino	72.7		58.3						N/A	--	--	--	--	--	--	--
Hispanic	57.1	71.9	65.5	49.3	73.0	70.8	61.5	63.5	N/A	--	--	--	--	--	--	--
Pac Isl									N/A	--	--	--	--	--	--	--
White	71.1	73.0	69.6	64.2	74.8	74.0	76.0	73.5	Yes	Yes	Yes	Yes	Yes	Yes	Yes	Yes
Econ. Disadvan.	74.1	83.8	75.3	60.3	64.8	69.3	71.6	70.2	N/A	--	--	--	--	--	--	Yes
Students w/ Disab.	33.3	37.8	33.3	36.1	31.9	42.2	42.5	50.7	N/A	--	--	--	--	--	--	--
Eng. Learners	75.7	71.4	68.8	60.0	60.6	80.0	65.2	69.4	N/A	--	--	--	--	--	--	--

