

2011 Accountability Progress Report

District Name: Murrieta Valley Unified

Produced by: SSchoolPlan and SchoolCity, Inc.

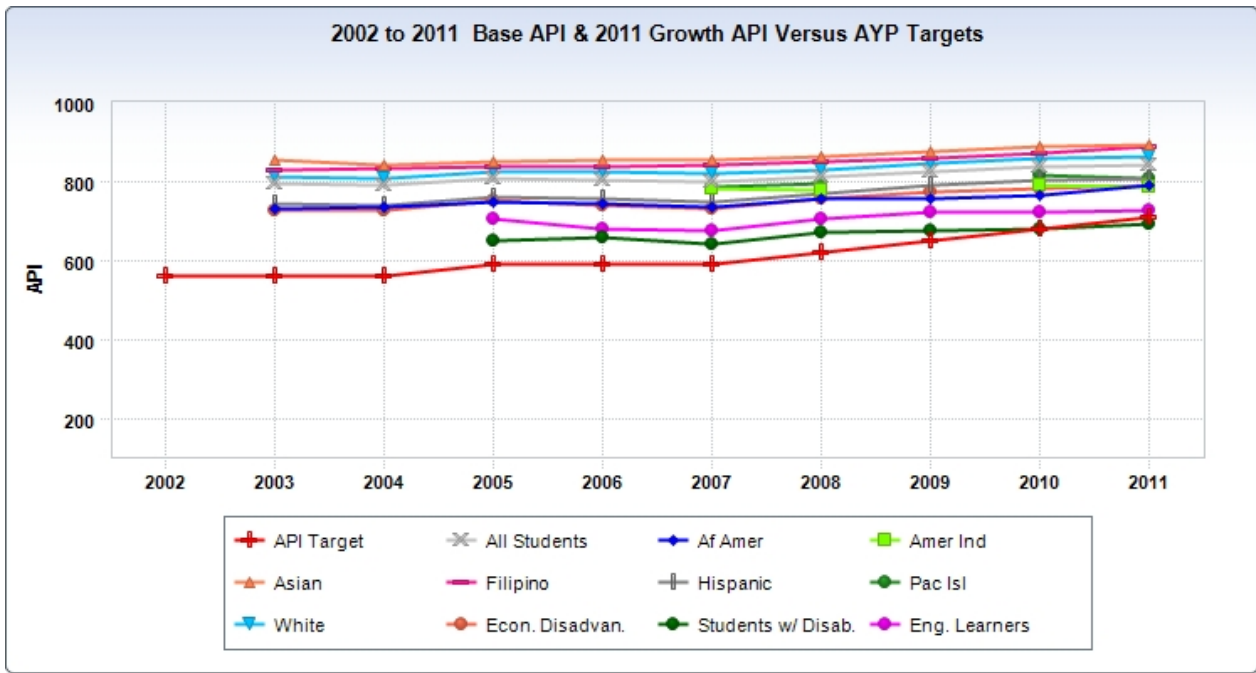
For more information contact:

Santa Clara County Office of Education
Standards & Assessment Department
(408) 453-6527

2002 - 2011 Academic Performance Index (API)

Base API Scores

Measurable Objectives (AMOs)	2002 API (Base)	2003 API (Base)	2004 API (Base)	2005 API (Base)	2006 API (Base)	2007 API (Base)	2008 API (Base)	2009 API (Base)	2010 API (Base)	2011 API (Growth)
API Target	560	560	560	590	590	590	620	650	680	710
All Students		795	792	807	805	799	812	826	837	843
Af Amer		733	735	748	745	736	757	755	766	789
Amer Ind						782	779		791	786
Asian		855	843	849	855	853	863	877	887	895
Filipino		831	833	837	839	842	851	860	872	889
Hispanic		745	741	761	757	749	769	790	803	810
Pac Isl						787	795		816	810
White		813	809	825	825	821	831	845	860	864
Econ. Disadvan.		727	727	753	740	732	755	775	784	793
Students w/ Disab.				651	658	641	671	677	680	693
Eng. Learners				707	682	676	704	721	722	726



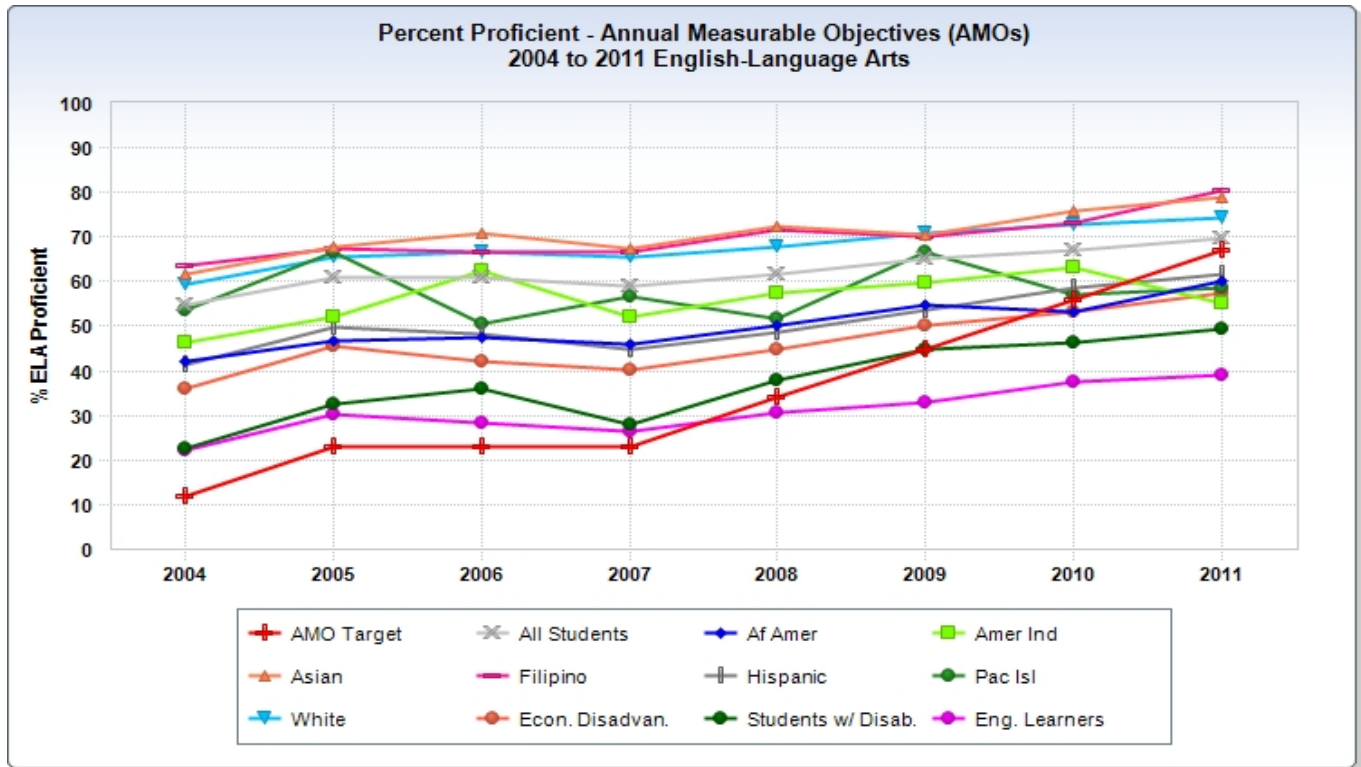
2004 - 2011 Adequate Yearly Progress (AYP)

AYP: English Language Arts (ELA)

% ELA Proficient

ELA AMO Met?

Measurable Objectives (AMOs)	% ELA Proficient								ELA AMO Met?							
	2004 ELA	2005 ELA	2006 ELA	2007 ELA	2008 ELA	2009 ELA	2010 ELA	2011 ELA	2004 ELA	2005 ELA	2006 ELA	2007 ELA	2008 ELA	2009 ELA	2010 ELA	2011 ELA
AMO Target	12.0	23.0	23.0	23.0	34.0	45.0	56.0	67.0								
All Students	54.7	60.9	60.8	58.9	61.8	65.0	67.2	69.6	Yes	Yes	Yes	Yes	Yes	Yes	Yes	Yes
Af Amer	42.0	46.6	47.7	46.0	50.3	54.9	53.3	60.1	Yes	Yes	Yes	Yes	Yes	Yes	No	No
Amer Ind	46.3	52.0	62.3	52.2	57.3	59.7	63.2	55.2	N/A	--	--	--	--	--	--	--
Asian	61.6	68.0	70.7	67.5	72.3	70.6	75.9	79.1	Yes	Yes	Yes	Yes	Yes	Yes	Yes	Yes
Filipino	63.7	67.5	66.5	66.7	71.8	70.3	73.0	80.5	Yes	Yes	Yes	Yes	Yes	Yes	Yes	Yes
Hispanic	41.5	49.9	48.2	44.8	48.7	53.7	58.6	61.6	Yes	Yes	Yes	Yes	Yes	Yes	Yes	No
Pac Isl	53.6	66.7	50.7	56.6	51.6	66.7	57.1	58.8	N/A	--	--	--	--	--	--	--
White	59.5	65.6	66.6	65.7	67.7	70.9	72.9	74.4	Yes	Yes	Yes	Yes	Yes	Yes	Yes	Yes
Econ. Disadvan.	36.1	45.7	42.3	40.4	45.0	50.3	53.4	57.4	Yes	Yes	Yes	Yes	Yes	Yes	No	No
Students w/ Disab.	22.5	32.5	35.9	28.1	38.1	44.8	46.4	49.3	Yes	Yes	Yes	Yes	Yes	Yes	No	No
Eng. Learners	22.3	30.3	28.2	26.4	30.6	33.0	37.4	39.2	Yes	Yes	Yes	Yes	No	No	No	No



2004 - 2011 Adequate Yearly Progress (AYP)

AYP: Mathematics

% Math Proficient

Math AMO Met?

Measurable Objectives (AMOs)	% Math Proficient								Math AMO Met?							
	2004 Math	2005 Math	2006 Math	2007 Math	2008 Math	2009 Math	2010 Math	2011 Math	2004 Math	2005 Math	2006 Math	2007 Math	2008 Math	2009 Math	2010 Math	2011 Math
AMO Target	12.8	23.7	23.7	23.7	34.6	45.5	56.4	67.3								
All Students	59.6	62.7	64.0	60.5	62.7	65.3	67.5	67.6	Yes	Yes	Yes	Yes	Yes	Yes	Yes	Yes
Af Amer	42.0	44.1	49.6	44.5	48.7	51.5	49.3	52.0	Yes	Yes	Yes	Yes	Yes	Yes	No	No
Amer Ind	60.8	57.3	63.6	55.6	57.3	54.5	53.7	55.2	N/A	--	--	--	--	--	--	--
Asian	72.3	74.4	74.9	74.6	75.2	79.0	80.1	80.2	Yes	Yes	Yes	Yes	Yes	Yes	Yes	Yes
Filipino	68.6	71.7	72.4	70.6	73.7	73.6	78.0	76.5	Yes	Yes	Yes	Yes	Yes	Yes	Yes	Yes
Hispanic	48.9	53.3	53.0	48.9	53.8	55.9	59.2	59.6	Yes	Yes	Yes	Yes	Yes	Yes	Yes	No
Pac Isl	60.8	63.5	68.5	56.6	58.7	69.7	58.7	60.0	N/A	--	--	--	--	--	--	--
White	63.5	66.8	68.6	66.0	66.9	69.9	72.9	72.8	Yes	Yes	Yes	Yes	Yes	Yes	Yes	Yes
Econ. Disadvan.	45.8	51.1	51.1	46.3	50.8	53.8	56.5	56.0	Yes	Yes	Yes	Yes	Yes	Yes	Yes	No
Students w/ Disab.	28.9	37.7	41.7	33.7	42.5	45.7	47.5	48.7	Yes	Yes	Yes	Yes	Yes	Yes	No	No
Eng. Learners	40.5	44.2	41.8	38.3	42.3	47.2	48.3	48.6	Yes	Yes	Yes	Yes	Yes	Yes	No	No

